

6500 series linear barcode verifier



THE BARCODE EXPERTS

Features

Verification for point of sale and outer case barcodes

ISO/IEC (ANSI) compliant verification

GS1 specifications

USB powered

Lightweight and portable

Two year warranty

Results are immediately displayed on screen, and reports can be printed or e-mailed for remote diagnosis. Reports may be saved automatically to support ISO 9001 quality control procedures. Simple user-friendly calibration, and configuration of how results are displayed. This verifier is perfect for product manufacturers, label printers, printers and packagers, and pre-press studios. It is widely used by major retailers worldwide.



Approved



Axicon 6515

Mid range barcode verifier

The Axicon 6515 barcode verifier has been designed to read linear barcodes with a width of up to 4.92" (125mm) including quiet zones. This means only one verifier is needed to check all your GS1 barcodes – EAN/UPC, ITF-14 and GS1-128 – if the outer case and logistics label barcodes are not at their maximum size.



Axicon 6525-S

High speed mid range barcode verifier

The 'S' range of Axicon verifiers has a continuous scan feature, which means that obtaining at least ten different readings throughout the height of the barcode (as required by ISO/IEC) is much faster. Simply place the verifier slightly above or below the barcode, press the trigger and slide the verifier over the code – in less than a second you can have results of up to 100 scans of the code at different points in the bar height.



Symbologies verified



Plus: Codabar, ITF, MSI Plessey and more...

Aperture reference

The software automatically identifies the symbology and its bar width (x-dimension) and adjusts the aperture size to comply with the symbology specifications and relevant ISO/IEC standard.

Free licence software

The verifier will analyse according to ISO/IEC 15416.

In addition the software can also check applications, such as:

GS1 General Specifications

Data content checking

Job Reference

ISBN barcodes

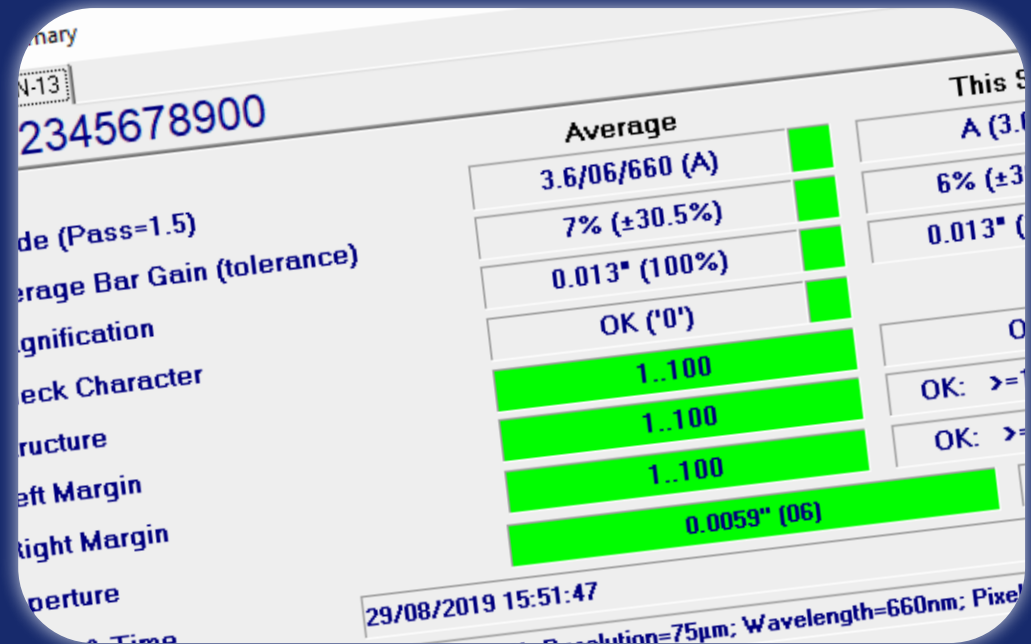
Product Lookup

Coupon codes

HIBC

Instore

And more....



Hardware specifications

Dimensions	145 x 113 x 128mm (5.7"x 4.4" x 5.0")
Weight	675g (23.8 oz)
Construction	ABS plastic, CCD sensor, LED illumination
IP Options	Available with IP50 (60529) rated protection.
Power consumption	Current draw 150mA at 5v – supplied from USB-2 host
Wavelength of light	660 nm (red)
Calibration	N.I.S.T. traceable calibration card with certificate included
Carry case	Supplied for transport and storage
Environmental	Operating temperature: 10° to 40°C - Storage temperature: -20° to 70°C Relative humidity: 25% to 80% @ 40°C non-condensing
Regulatory approvals	CE certified, RoHS compliant



Contact

Barcode-Test
8726 Seminole Trail
Unit B3
Ruckersville
VA 22968



Tel: +01 (434) 939 9647
Email: john@barcode-test.com
Web: www.barcode-test.com

